

# Closed System Land Based Holding

Alizée Zimmermann

Turks & Caicos Reef Fund



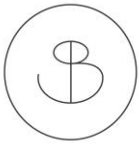
Alizee@TCReef.org

May 2024 – Key West

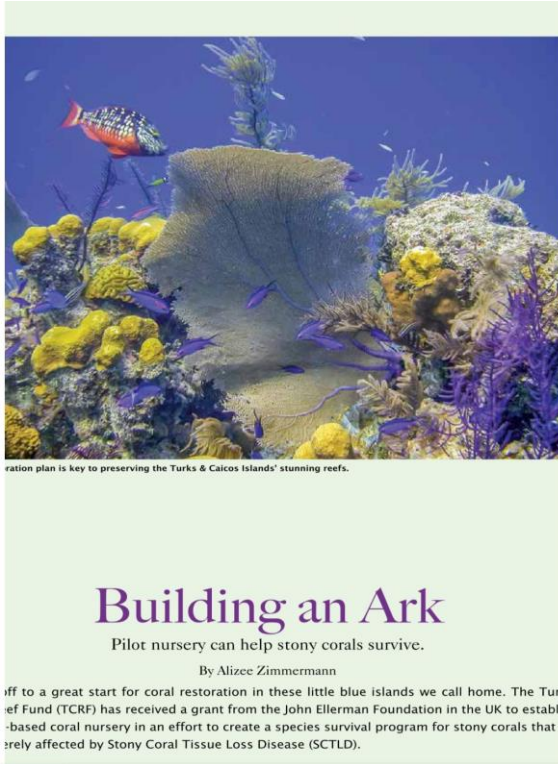




John  
Ellerman  
Foundation



SOUTH BANK  
TURKS & CAICOS



In the summer of 2020, I stood in our (empty) office space and decided that within 2 years we NEEDED to get corals out of the water if we were to prevent species extinction, but I've never even had a goldfish!

2yrs, 3months and 5 days later we brought in our first colonies



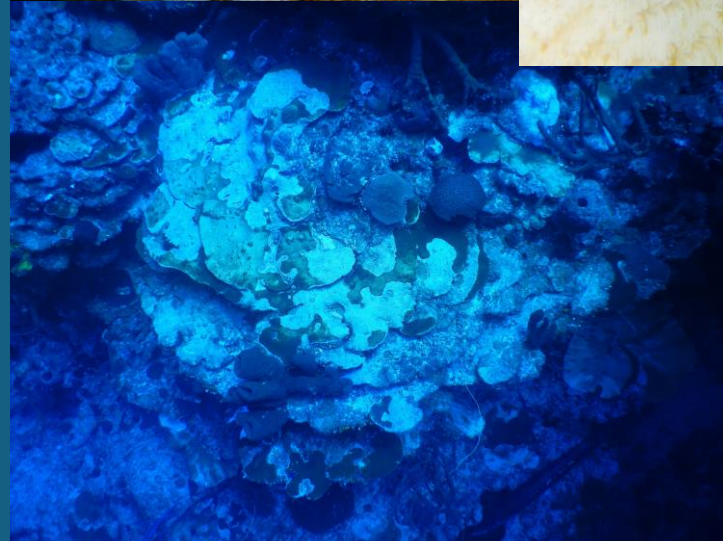
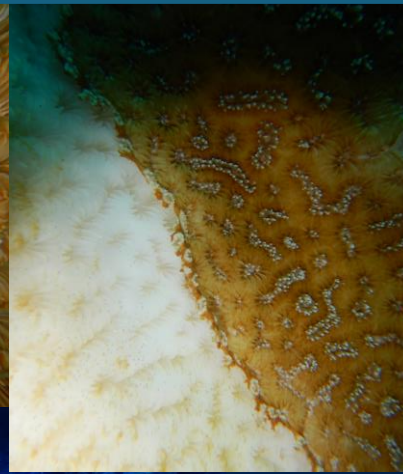
# WHY EX-SITU RESCUE?

## The World of Coral Rescue is Changing

Traditional large-scale rescue/restoration:  
asexual fragmentation and in-situ coral  
nurseries. Focus on collecting genetically  
diverse colonies but after initial collection...  
Monoculture.

**Growing/stocking coral in-situ is getting harder...**

- Stony Coral Tissue Loss Disease (SCTLD) & other disease/mortality disturbances
- Unprecedented bleaching levels
- The Atlantic Ocean





# INFRASTRUCTURE



Video 1: Beginning



# SPAWNING



Video 1: 1min 38 sec



## BIO-BANK – SO MUCH MORE THAN JUST A GENE-BANK

Ex-Situ holding of entire coral colonies represents more than just a genetic bank. It represents the availability of biological material for research, reproduction (asexual & sexual) AND genetics.

## HOLD MY BRAIDS...

Even if it all fails (which I hope it doesn't)...  
The education component and exposure to marine science is a win.

Seeing is believing. – They're not just 'pretty rocks'



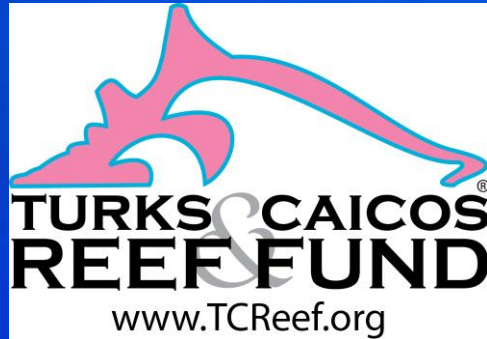


# CLOSED, OPEN, CONTAINER



Video 1: 7min 30 sec

**THANK YOU!**



**Alizée Zimmermann**  
**Executive Director**  
**Turks & Caicos Reef Fund**  
**alizée@tcreef.org**

**ACTION IS THE ANTIDOTE  
TO DESPAIR\***

\*JOAN BAEZ

**&  
COMPASSION INSPIRES  
ACTION**



**@tcreef\_fund**

DLAB 'Grooved Brain Coral' leggings  
Designed by local company T SEA I  
<https://www.tseai.shop/collections/women/products/reef-fund-brain-coral-leggings>



# QUESTIONS?



Video 1: 3min 55sec